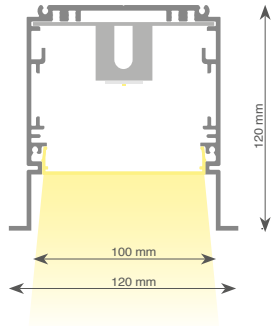


LEDLiner100

Recessed

Aluminium extruded profile for recessed applications. LEDLiner100 offers the possibility to integrate uninterrupted light lines, accent spot modules or combinations of both. Linear modules are available with opal covers or with lens array. LEDLiner100 offers the latest and best performing LED lighting technology using Philips LED Lines.

Average weight of equipped profile:
4.40kg/m



Possibilities

Modules:

- Linear LED modules - Down
- Titan Module
- Atlas Module

Options/Accessories

- Emergency lighting (1Hr/3Hrs)

5 Years **Philips** Warranty

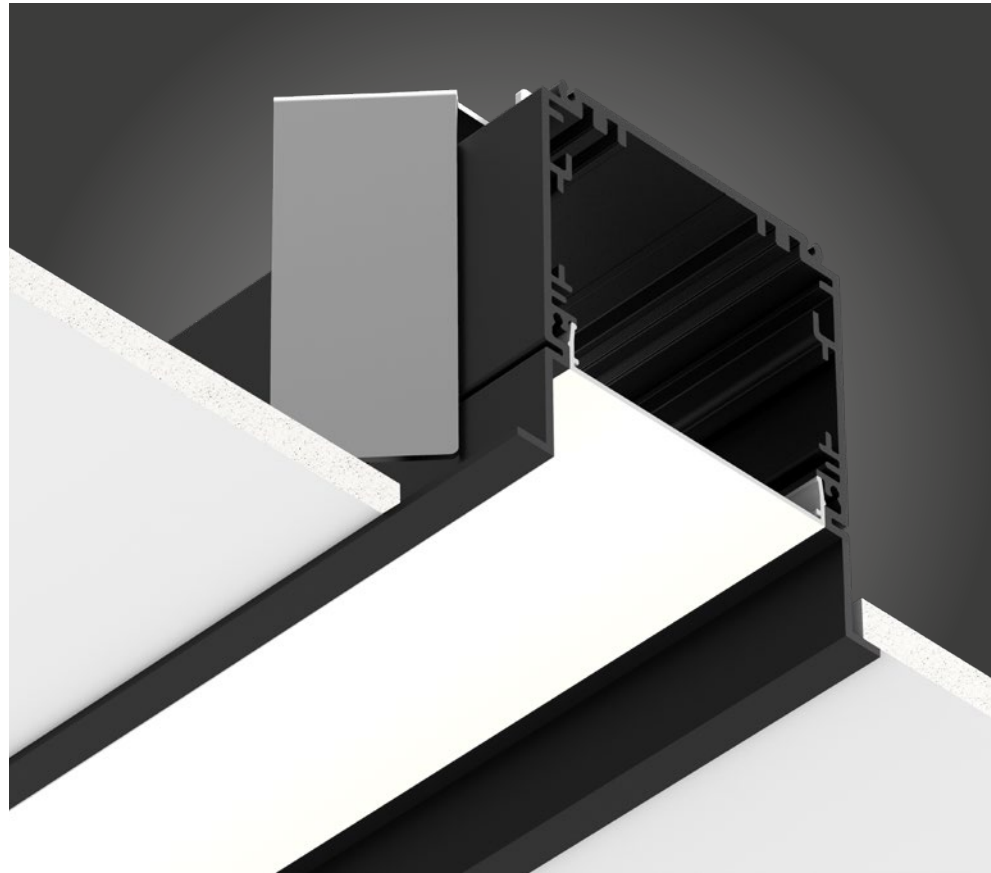
Index

Custom made:

Linear modules Down..... p.248

Ready To Go:

Recessed..... p.174



Available colors

01

White Matt Text.

18

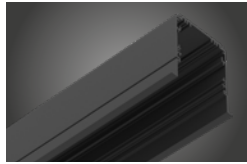
Grey Matt Text.

03

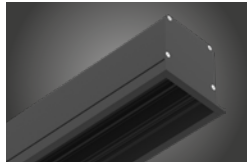
Black Matt Text.

Basic components

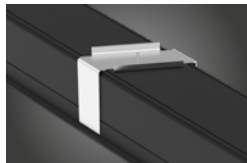
LEDLiner100 Recessed



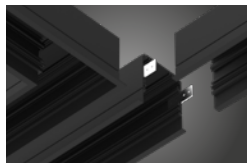
Recessed Carrier Profile /meter
 Matt White Texture 2108.00.01
 Matt Black Texture 2108.00.03
 Matt Grey 9006 Texture 2108.00.18
 Max. length single piece 3400mm



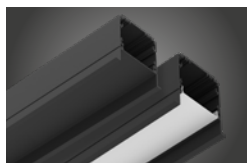
End cap Recessed (1 piece)
 Matt White Texture 2181.00.01
 Matt Black Texture 2181.00.03
 Matt Grey 9006 2181.00.18



Mounting Bracket Recessed
Recessed Bracket 2193.00.00
 0-1400mm: 2 brackets required
 1401-2400mm: 3 brackets required
 2401mm-3400mm: 4 brackets required



Connector Recessed
 90° 2205.00.00
 180° 2206.00.00

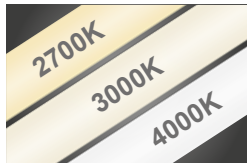


Cover /meter
 Opal PC Cover 2207.00.00
 Matt Black Texture 2207.00.03
 Matt White Texture 2207.00.01



3-Phase Track for Recessed
Per meter (spot not included)
 White 2115.00.01
 Black 2115.00.03
 Grey 2115.00.18

Linear Modules

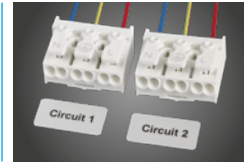


Linear Down
 Philips Fortimo LED Module 1100lm/ft
 See linear modules p.248-249

Available linear modules:
 Ra80 - 3000K / 4000K
 Ra90 - 2700K / 3000K / 4000K

Optional modules

Electrical



Extra circuit
Per meter
 Extra circuit /m 650.00.00
 When multiple modules are used in one profile, modules can be switched individually using multiple circuits. Length of extra circuit equals the full length of the profile.

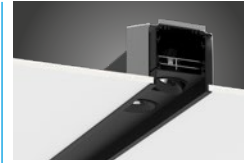
Extra



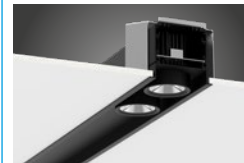
Emergency module for linear modules
 1Hr Standard 659.24.LED-1
 3Hrs Standard 659.24.LED-3
 1Hr DALI 659.26.LED-1
 3Hrs DALI 659.26.LED-3
 Emergency modules are equipped with self-testing. DALI version with on command testing, status read-out and additional functionality. More info see p.271

Spot modules

Downlight Modules



Titan Recessed Spot
 Orientable spot module (driver included)
 More info see p.184



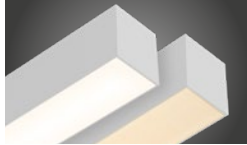
Atlas Recessed Spot
 Fixed spot module (driver included)
 More info see p.184



Atlas Spot
 Orientable spot module (driver included)
 More info see p.185

Linear Modules: LEDLiner Down

Philips Fortimo LED Module 1100lm/ft*



Module availability:

- LEDLiner35
- LEDLiner47
- LEDLiner65
- LEDLiner66
- LEDLiner85
- LEDLiner170
- LEDLiner40 Trimless
- LEDLiner40 Recessed
- LEDLiner45 Recessed
- LEDLiner65 Recessed
- LEDLiner100 Trimless
- LEDLiner100 Recessed

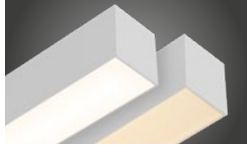
		2700K - Ra90 Opal diffuser		3000K - Ra80 Opal diffuser		4000K - Ra80 Opal diffuser		2700K - Ra90 Prismatic diffuser		3000K - Ra80 Prismatic diffuser		4000K - Ra80 Prismatic diffuser	
3300lm 844mm	Non dimmable	18.6W	2220.24.927.3300	2220.24.830.3300	2220.24.840.3300	2220.24.927.3300.P	2220.24.830.3300.P	2220.24.840.3300.P					
	1-10V dimmable	18.6W	2220.25.927.3300	2220.25.830.3300	2220.25.840.3300	2220.25.927.3300.P	2220.25.830.3300.P	2220.25.840.3300.P					
	Touch/DALI dim.	18.6W	2220.26.927.3300	2220.26.830.3300	2220.26.840.3300	2220.26.927.3300.P	2220.26.830.3300.P	2220.26.840.3300.P					
3850lm 986mm	Non dimmable	21.7W	Not available	2220.24.830.3850	2220.24.840.3850	Not available	2220.24.830.3850.P	2220.24.840.3850.P					
	1-10V dimmable	21.7W	Not available	2220.25.830.3850	2220.25.840.3850	Not available	2220.25.830.3850.P	2220.25.840.3850.P					
	Touch/DALI dim.	21.7W	Not available	2220.26.830.3850	2220.26.840.3850	Not available	2220.26.830.3850.P	2220.26.840.3850.P					
4400lm 1124mm	Non dimmable	24.8W	2220.24.927.4400	2220.24.830.4400	2220.24.840.4400	2220.24.927.4400.P	2220.24.830.4400.P	2220.24.840.4400.P					
	1-10V dimmable	24.8W	2220.25.927.4400	2220.25.830.4400	2220.25.840.4400	2220.25.927.4400.P	2220.25.830.4400.P	2220.25.840.4400.P					
	Touch/DALI dim.	24.8W	2220.26.927.4400	2220.26.830.4400	2220.26.840.4400	2220.26.927.4400.P	2220.26.830.4400.P	2220.26.840.4400.P					
4950lm 1266mm	Non dimmable	27.9W	Not available	2220.24.830.4950	2220.24.840.4950	Not available	2220.24.830.4950.P	2220.24.840.4950.P					
	1-10V dimmable	27.9W	Not available	2220.25.830.4950	2220.25.840.4950	Not available	2220.25.830.4950.P	2220.25.840.4950.P					
	Touch/DALI dim.	27.9W	Not available	2220.26.830.4950	2220.26.840.4950	Not available	2220.26.830.4950.P	2220.26.840.4950.P					
5500lm 1406mm	Non dimmable	31W	2220.24.927.5500	2220.24.830.5500	2220.24.840.5500	2220.24.927.5500.P	2220.24.830.5500.P	2220.24.840.5500.P					
	1-10V dimmable	31W	2220.25.927.5500	2220.25.830.5500	2220.25.840.5500	2220.25.927.5500.P	2220.25.830.5500.P	2220.25.840.5500.P					
	Touch/DALI dim.	31W	2220.26.927.5500	2220.26.830.5500	2220.26.840.5500	2220.26.927.5500.P	2220.26.830.5500.P	2220.26.840.5500.P					
6050lm 1548mm	Non dimmable	34.1W	Not available	2220.24.830.6050	2220.24.840.6050	Not available	2220.24.830.6050.P	2220.24.840.6050.P					
	1-10V dimmable	34.1W	Not available	2220.25.830.6050	2220.25.840.6050	Not available	2220.25.830.6050.P	2220.25.840.6050.P					
	Touch/DALI dim.	34.1W	Not available	2220.26.830.6050	2220.26.840.6050	Not available	2220.26.830.6050.P	2220.26.840.6050.P					
6600lm 1686mm	Non dimmable	37.2W	2220.24.927.6600	2220.24.830.6600	2220.24.840.6600	2220.24.927.6600.P	2220.24.830.6600.P	2220.24.840.6600.P					
	1-10V dimmable	37.2W	2220.25.927.6600	2220.25.830.6600	2220.25.840.6600	2220.25.927.6600.P	2220.25.830.6600.P	2220.25.840.6600.P					
	Touch/DALI dim.	37.2W	2220.26.927.6600	2220.26.830.6600	2220.26.840.6600	2220.26.927.6600.P	2220.26.830.6600.P	2220.26.840.6600.P					
7150lm 1828mm	Non dimmable	40.3W	Not available	2220.24.830.7150	2220.24.840.7150	Not available	2220.24.830.7150.P	2220.24.840.7150.P					
	1-10V dimmable	40.3W	Not available	2220.25.830.7150	2220.25.840.7150	Not available	2220.25.830.7150.P	2220.25.840.7150.P					
	Touch/DALI dim.	40.3W	Not available	2220.26.830.7150	2220.26.840.7150	Not available	2220.26.830.7150.P	2220.26.840.7150.P					
7700lm 1968mm	Non dimmable	43.4W	2220.24.927.7700	2220.24.830.7700	2220.24.840.7700	2220.24.927.7700.P	2220.24.830.7700.P	2220.24.840.7700.P					
	1-10V dimmable	43.4W	2220.25.927.7700	2220.25.830.7700	2220.25.840.7700	2220.25.927.7700.P	2220.25.830.7700.P	2220.25.840.7700.P					
	Touch/DALI dim.	43.4W	2220.26.927.7700	2220.26.830.7700	2220.26.840.7700	2220.26.927.7700.P	2220.26.830.7700.P	2220.26.840.7700.P					
8250lm 2110mm	Non dimmable	46.5W	Not available	2220.24.830.8250	2220.24.840.8250	Not available	2220.24.830.8250.P	2220.24.840.8250.P					
	1-10V dimmable	46.5W	Not available	2220.25.830.8250	2220.25.840.8250	Not available	2220.25.830.8250.P	2220.25.840.8250.P					
	Touch/DALI dim.	46.5W	Not available	2220.26.830.8250	2220.26.840.8250	Not available	2220.26.830.8250.P	2220.26.840.8250.P					

Only available for LEDLiner65, LEDLiner65 Recessed, LEDLiner66, LEDLiner85 and LEDLiner170

* The luminous flux given on this page refers to module in 4000K - Ra80.
For exact specifications see table on page 262

Linear Modules: LEDLiner Down

Philips Fortimo LED Module 1100lm/ft*



Module availability:

- LEDLiner35
- LEDLiner47
- LEDLiner65
- LEDLiner66
- LEDLiner85
- LEDLiner170
- LEDLiner40 Trimless
- LEDLiner40 Recessed
- LEDLiner45 Recessed
- LEDLiner65 Recessed
- LEDLiner100 Trimless
- LEDLiner100 Recessed

			2700K - Ra90 Opal diffuser	3000K - Ra80 Opal diffuser	4000K - Ra80 Opal diffuser	2700K - Ra90 Prismatic diffuser	3000K - Ra80 Prismatic diffuser	4000K - Ra80 Prismatic diffuser
8800lm 2248mm	Non dimmable	49.6W	2220.24.927.8800	2220.24.830.8800	2220.24.840.8800	2220.24.927.8800.P	2220.24.830.8800.P	2220.24.840.8800.P
	1-10V dimmable	49.6W	2220.25.927.8800	2220.25.830.8800	2220.25.840.8800	2220.25.927.8800.P	2220.25.830.8800.P	2220.25.840.8800.P
	Touch/DALI dim.	49.6W	2220.26.927.8800	2220.26.830.8800	2220.26.840.8800	2220.26.927.8800.P	2220.26.830.8800.P	2220.26.840.8800.P
9350lm 2390mm	Non dimmable	52.7W	Not available	2220.24.830.9350	2220.24.840.9350	Not available	2220.24.830.9350.P	2220.24.840.9350.P
	1-10V dimmable	52.7W	Not available	2220.25.830.9350	2220.25.840.9350	Not available	2220.25.830.9350.P	2220.25.840.9350.P
	Touch/DALI dim.	52.7W	Not available	2220.26.830.9350	2220.26.840.9350	Not available	2220.26.830.9350.P	2220.26.840.9350.P
9900lm 2530mm	Non dimmable	55.8W	2220.24.927.9900	2220.24.830.9900	2220.24.840.9900	2220.24.927.9900.P	2220.24.830.9900.P	2220.24.840.9900.P
	1-10V dimmable	55.8W	2220.25.927.9900	2220.25.830.9900	2220.25.840.9900	2220.25.927.9900.P	2220.25.830.9900.P	2220.25.840.9900.P
	Touch/DALI dim.	55.8W	2220.26.927.9900	2220.26.830.9900	2220.26.840.9900	2220.26.927.9900.P	2220.26.830.9900.P	2220.26.840.9900.P
10450lm 2672mm	Non dimmable	58.9W	Not available	2220.24.830.10450	2220.24.840.10450	Not available	2220.24.830.10450.P	2220.24.840.10450.P
	1-10V dimmable	58.9W	Not available	2220.25.830.10450	2220.25.840.10450	Not available	2220.25.830.10450.P	2220.25.840.10450.P
	Touch/DALI dim.	58.9W	Not available	2220.26.830.10450	2220.26.840.10450	Not available	2220.26.830.10450.P	2220.26.840.10450.P
11000lm 2810mm	Non dimmable	62W	2220.24.927.11000	2220.24.830.11000	2220.24.840.11000	2220.24.927.11000.P	2220.24.830.11000.P	2220.24.840.11000.P
	1-10V dimmable	62W	2220.25.927.11000	2220.25.830.11000	2220.25.840.11000	2220.25.927.11000.P	2220.25.830.11000.P	2220.25.840.11000.P
	Touch/DALI dim.	62W	2220.26.927.11000	2220.26.830.11000	2220.26.840.11000	2220.26.927.11000.P	2220.26.830.11000.P	2220.26.840.11000.P
11550lm 2952mm	Non dimmable	65.1W	Not available	2220.24.830.11550	2220.24.840.11550	Not available	2220.24.830.11550.P	2220.24.840.11550.P
	1-10V dimmable	65.1W	Not available	2220.25.830.11550	2220.25.840.11550	Not available	2220.25.830.11550.P	2220.25.840.11550.P
	Touch/DALI dim.	65.1W	Not available	2220.26.830.11550	2220.26.840.11550	Not available	2220.26.830.11550.P	2220.26.840.11550.P
12100lm 3092mm	Non dimmable	68.2W	2220.24.927.12100	2220.24.830.12100	2220.24.840.12100	2220.24.927.12100.P	2220.24.830.12100.P	2220.24.840.12100.P
	1-10V dimmable	68.2W	2220.25.927.12100	2220.25.830.12100	2220.25.840.12100	2220.25.927.12100.P	2220.25.830.12100.P	2220.25.840.12100.P
	Touch/DALI dim.	68.2W	2220.26.927.12100	2220.26.830.12100	2220.26.840.12100	2220.26.927.12100.P	2220.26.830.12100.P	2220.26.840.12100.P
12650lm 3234mm	Non dimmable	71.3W	Not available	2220.24.830.12650	2220.24.840.12650	Not available	2220.24.830.12650.P	2220.24.840.12650.P
	1-10V dimmable	71.3W	Not available	2220.25.830.12650	2220.25.840.12650	Not available	2220.25.830.12650.P	2220.25.840.12650.P
	Touch/DALI dim.	71.3W	Not available	2220.26.830.12650	2220.26.840.12650	Not available	2220.26.830.12650.P	2220.26.840.12650.P
13200lm 3372mm	Non dimmable	74.4W	2220.24.927.13200	2220.24.830.13200	2220.24.840.13200	2220.24.927.13200.P	2220.24.830.13200.P	2220.24.840.13200.P
	1-10V dimmable	74.4W	2220.25.927.13200	2220.25.830.13200	2220.25.840.13200	2220.25.927.13200.P	2220.25.830.13200.P	2220.25.840.13200.P
	Touch/DALI dim.	74.4W	2220.26.927.13200	2220.26.830.13200	2220.26.840.13200	2220.26.927.13200.P	2220.26.830.13200.P	2220.26.840.13200.P

Only available for LEDLiner65, LEDLiner65 Recessed, LEDLiner66, LEDLiner85 and LEDLiner170