

NEW Aster
Trimless

Type Downlight
 Mounting Trimless
 Material Aluminium
 Adjustable Mix only (30°/359°)
 El. class / IP Class III / IP20
 El. class driver Class II
 Warranty: see p.348

Bridgelux Vero 10 LED (500mA)


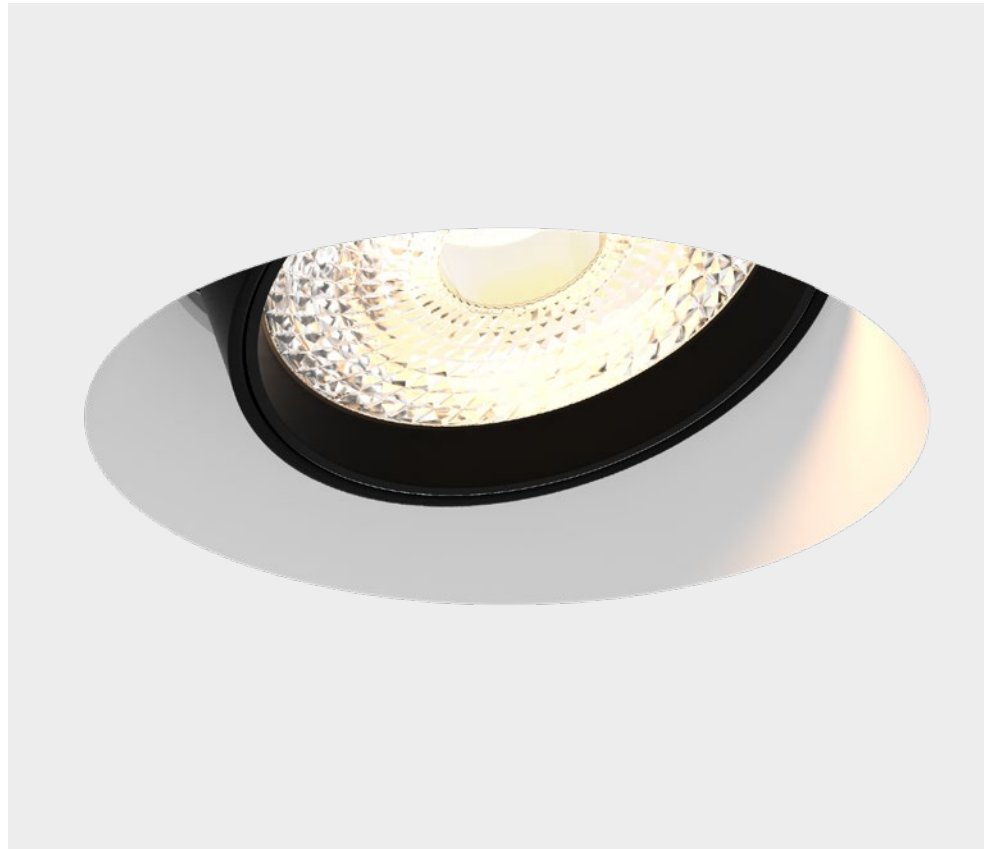
CCT 2700K / 3000K / 4000K
 CRI Ra90 (Ra80 on request)
 SDCM 3
 Luminous Flux LED
 2700K - Ra90: 1439lm (111lm/W)
 3000K - Ra90: 1505lm (116lm/W)
 4000K - Ra90: 1592lm (123lm/W)
 Luminous Flux System
 2700K - Ra90: 1295lm (100lm/W)
 3000K - Ra90: 1355lm (105lm/W)
 4000K - Ra90: 1433lm (111lm/W)
 Beam angle 25° / 36° / 52°
 LED Power 12.9W / 500mA (excl. driver)
 System Power 14.8W / 500mA (incl. driver)
 Forward voltage 23.4V (min.) - 25.9V (typ.) - 28.4V (max.)

Bridgelux Dim-to-warm LED (more info see p.330)

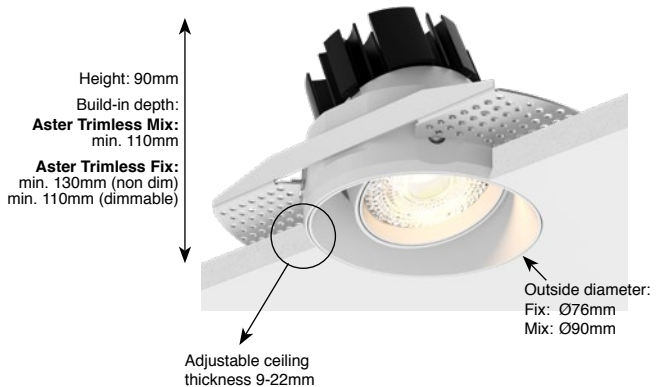
CCT Dim-to-warm 1800-3000K
 CRI Ra90
 Luminous Flux LED: 860lm - System: 774lm
 LED Power 8.2W / 250mA (excl. driver)
 System Power 9.4W / 250mA (incl. driver)

DIM TO WARM

Fix: Ø79-80mm
 Mix: Ø92-95mm

Trimless gypkit included



Driver:
 - Included in article number and included in price
 - External/Remote installation

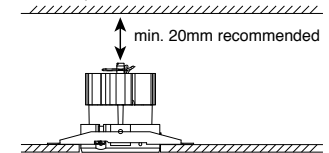
Data sheets and wiring guide: see website
Driver information: see p.334-335

Options
 Honeycomb Grid 1808.00.00
 Provides more visual comfort

On Request
 LED with CRI Ra97
 Class A LED



Air circulation notice:
 Do not topload with insulation materials



Ceiling thickness min. 9mm



Aster Trimless Fix

PRICES INCL. DRIVERS

Non dim 500mA (Driver 493.24.22 incl.)

2700K - Ra90 - 14.8W - 1295lm 1806.AA.24.927.XX

3000K - Ra90 - 14.8W - 1355lm 1806.AA.24.930.XX

4000K - Ra90 - 14.8W - 1433lm 1806.AA.24.940.XX

1-10V dim & Push dim 500mA (Driver 490.25.20 incl.)

2700K - Ra90 - 14.8W - 1295lm 1806.AA.25.927.XX

3000K - Ra90 - 14.8W - 1355lm 1806.AA.25.930.XX

4000K - Ra90 - 14.8W - 1433lm 1806.AA.25.940.XX

DALI dim 500mA (Driver 490.26.20 incl.)

2700K - Ra90 - 14.8W - 1295lm 1806.AA.26.927.XX

3000K - Ra90 - 14.8W - 1355lm 1806.AA.26.930.XX

4000K - Ra90 - 14.8W - 1433lm 1806.AA.26.940.XX

Mains dim 500mA (Driver 493.27.20 incl.)

2700K - Ra90 - 14.8W - 1295lm 1806.AA.27.927.XX

3000K - Ra90 - 14.8W - 1355lm 1806.AA.27.930.XX

4000K - Ra90 - 14.8W - 1433lm 1806.AA.27.940.XX

DALI dim / Dim to Warm 1800-3000K (Driver 490.26.20 incl.)

DTW (DALI dim) - 9.4W - 774lm 1806.AA.26.dtw.XX

Mains dim / Dim to Warm 1800-3000K (Driver 497.27.20 incl.)

DTW (mains dim) - 9.4W - 774lm 1806.AA.27.dtw.XX



Aster Trimless Mix

PRICES INCL. DRIVERS

Non dim 500mA (Driver 493.24.22 incl.)

2700K - Ra90 - 14.8W - 1295lm 1807.AA.24.927.XX

3000K - Ra90 - 14.8W - 1355lm 1807.AA.24.930.XX

4000K - Ra90 - 14.8W - 1433lm 1807.AA.24.940.XX

1-10V dim & Push dim 500mA (Driver 490.25.20 incl.)

2700K - Ra90 - 14.8W - 1295lm 1807.AA.25.927.XX

3000K - Ra90 - 14.8W - 1355lm 1807.AA.25.930.XX

4000K - Ra90 - 14.8W - 1433lm 1807.AA.25.940.XX

DALI dim 500mA (Driver 490.26.20 incl.)

2700K - Ra90 - 14.8W - 1295lm 1807.AA.26.927.XX

3000K - Ra90 - 14.8W - 1355lm 1807.AA.26.930.XX

4000K - Ra90 - 14.8W - 1433lm 1807.AA.26.940.XX

Mains dim 500mA (Driver 493.27.20 incl.)

2700K - Ra90 - 14.8W - 1295lm 1807.AA.27.927.XX

3000K - Ra90 - 14.8W - 1355lm 1807.AA.27.930.XX

4000K - Ra90 - 14.8W - 1433lm 1807.AA.27.940.XX

DALI dim / Dim to Warm 1800-3000K (Driver 490.26.20 incl.)

DTW (DALI dim) - 9.4W - 774lm 1807.AA.26.dtw.XX

Mains dim / Dim to Warm 1800-3000K (Driver 497.27.20 incl.)

DTW (mains dim) - 9.4W - 774lm 1807.AA.27.dtw.XX

25° Lens: 0000.25.00.000.00

36° Lens: 0000.36.00.000.00

52° Lens: 0000.52.00.000.00

Available colors: 0000.00.00.000.XX

Other RAL colors on request



01
White Matt Text.
Standard



18
Grey Matt Text.
Standard



07
Anthracite Matt Text.
Standard



03
Black Matt Text.
Standard



05
White + Black Matt
Standard



11
Gold + Black Matt



12
Gold + White Matt



16
Gold Matt