

Fortimo LED Line 1R 1100lm/ft + High Flux Systems

Features and benefits:

A choice of systems, designed with specifications for different applications, allowing a wide assortment of fluorescent luminaires to be upgraded to LEDs.

Efficiency levels surpassing T5 and PL-L lamps.

High quality white light LED modules, meeting the European norms for Indoor lighting.

A linear shape of LED modules, specifically chosen for covering the widest variety of luminaire shapes from square to rectangular in all lengths and sizes with one building block.

Fortimo LED Line modules come as a system with the Xitanium 75W family of drivers in a linear housing matching T5 drivers, for easy incorporation in to existing luminaires.

The LED Line systems have been designed so that no further heat sink is needed.

Lifetime of 50k hours, due to the combination of LEDs and special Philips phosphor technology.

Fortimo LED Line modules have a low level of integration, whereby primary optics still need to be added, allowing luminaire manufacturers to create more differentiation in luminaire design.



5 Year **PHILIPS** warranty

Philips Fortimo LEDLine LED possibilities		Light output	Module efficacy	Power consumption	Colour rendering index	Colour temperature	Colour consistency	Life @ 70% lm maintenance
		lm	lm/W	W	Ra	K	SDCM	K hrs
1ft HV	Fortimo LED Line 1ft, 1100lm 830 1R HV3	1046	145	7.2	>80	3000	3	50
	Fortimo LED Line 1ft, 1100lm 840 1R HV3	1100	152	7.2	>80	4000	3	50
2ft HV	Fortimo LED Line 2ft, 2200lm 830 1R HV3	2092	145	14.5	>80	3000	3	50
	Fortimo LED Line 2ft, 2200lm 840 1R HV3	2200	152	14.5	>80	4000	3	50
High Flux	Fortimo LED Line 2ft 4000lm 830 1R LV2	3820	136	28	>80	3000	3	50
	Fortimo LED Line 2ft 4000lm 840 1R LV2	4000	142	28	>80	4000	3	50

Fortimo LED Strip HV 2200lm/ft Systems

Features and benefits:

In today's rapidly changing office market, demand is increasing for scalable, energy-efficient LED lighting solutions that enhance the workspace, supporting both staff well-being and corporate image. In this evolving environment, luminaire manufacturers want a component that offers fluorescent replacement solutions and that will allow them to create slender, seamless light-lines that do not compromise on the light quality their customers are used to.

Fortimo LED Strip is a sleek linear LED array with a fixed form factor and consistent high-quality white light making it possible to create new slimline designs that go beyond traditional fluorescent office applications. Supported with a state-of-the-art Xitanium driver, it is easy to design-in, enabling fast luminaire creation.

And because this energy-efficient system is scalable and upgradable, it offers a truly future-proof solution.



5 Year **PHILIPS** warranty

Fortimo LED Line LV		Light output	Module efficacy	Power consumption	Colour rendering index	Colour temperature	Colour consistency	Life @ 70% lm maintenance
		lm	lm/W	W	Ra	K	SDCM	K hrs
1ft	Fortimo LED Strip 1ft 1100lm 830 1R HV3	1060	155	6.8	>80	3000	3	50
	Fortimo LED Strip 1ft 1100lm 840 1R HV3	1100	160	6.8	>80	4000	3	50
2ft	Fortimo LED Strip 2ft 2200lm 830 1R HV3	2120	155	13.7	>80	3000	3	50
	Fortimo LED Strip 2ft 2200lm 840 1R HV3	2200	160	13.7	>80	4000	3	50

Fortimo LED Strip LV 650lm/ft Systems

Features and benefits:

In today's rapidly changing office market, demand is increasing for scalable, energy-efficient LED lighting solutions that enhance the workspace, supporting both staff well-being and corporate image. In this evolving environment, luminaire manufacturers want a component that offers fluorescent replacement solutions and that will allow them to create slender, seamless light-lines that do not compromise on the light quality their customers are used to. Fortimo LED Strip is a sleek linear LED array with a fixed form factor and consistent high-quality white light making it possible to create new slimline designs that go beyond traditional fluorescent office applications. Supported with a state-of-the-art Xitanium driver, it is easy to design-in, enabling fast luminaire creation. And because this energy-efficient system is scalable and upgradable, it offers a truly future-proof solution.

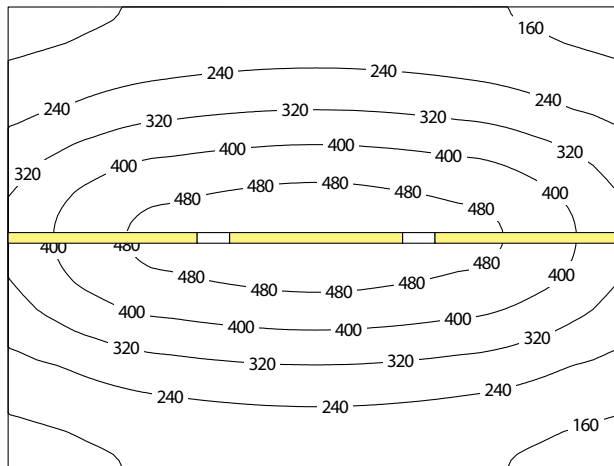


5 Year **PHILIPS** warranty

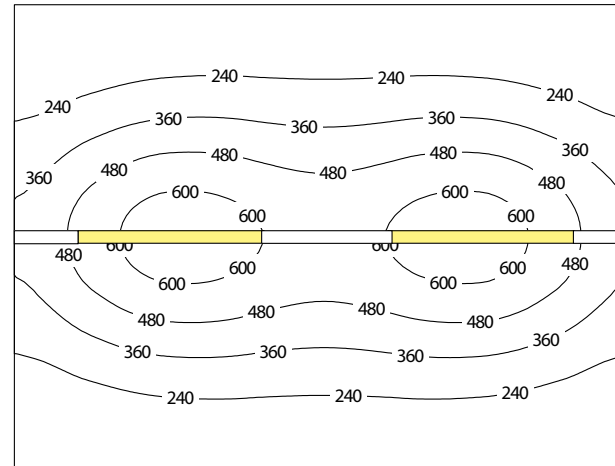
Fortimo LED Line LV		Light output	Module efficacy	Power consumption	Colour rendering index	Colour temperature	Colour consistency	Life @ 70% Im maintenance
		lm	lm/W	W	Ra	K	SDCM	K hrs
1ft	Fortimo LED Strip 1ft 650lm 830 1R LV1	620	151	4.1	>80	3000	3	50
	Fortimo LED Strip 1ft 650lm 830 1R LV1	650	160	4.1	>80	4000	3	50

Philips Fortimo LED Line vs. T5 fluorescent lamps

T5 (3x 54W)



LED Line (4x LED Line 1R 2ft 1100lm/ft):



	T5	LED Line
Room dimensions	L 4m - W 3m - H 2.8m	L 4m - W 3m - H 2.8m
Mounting height	2.2m	2.2m
Average light output	316lux	346lux
Power consumption	177W (incl. ballast)	64W (incl. driver)
Light output	14.75W/m ² = 4.67W/m ² /100lx	5.34W/m ² = 1.54W/m ² /100lx

LED Line saves up to 65% of energy